

Operating Instructions






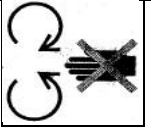
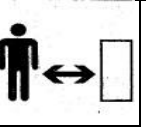



Matterhorn Salt Spreader

M 4.1

1. Health and Safety Instructions

- When filling the spreader, take due care and follow the instructions supplied with the salt or other spreading material.
- When operating the spreader do not try to adjust or clean the gear of the spreader with bare hands – always use an appropriate tool. The spreader mechanism contains sharp parts and there is a danger of injury. Never try to handle the spreader mechanism whilst the spreader is in motion.
- The salt material must not touch the skin, as the material is corrosive and could damage the skin. The symbols below are provided to enhance personal safety when operating the spreader.

			
			
1	2	3	4
Always read the instructions	Do not touch moving parts	Keep a safe distance	Do not allow the spreading material to touch the skin

Do not use the spreader:

- Where you do not know the condition of the surface
- Where there might be dangerous objects such as scrap glass, bottles, rubbish, stones, ropes, wires etc.
- Where there is a danger of people moving close to the machine (20 m clearance should be left around the machine)

2. Operation

The weight of the spreader is 8 kg.

The Matterhorn Spreader is designed for salting pavements and other small areas such as car parks and playgrounds during winter.

To achieve the optimum coverage, the operator should adjust the opening of the feeding holes in the bottom of the spreader. The level of adjustment will depend on the material used, the required area to be covered and the actual working environment.

Attention: The opening is sensitive to the actual working conditions a trial run before the work commences is recommended to avoid over or under usage of salt.

Under normal conditions a full hopper will cover 400m² of area with the feeder holes fully opened. Depending on the speed, the spreader will cover a 3 m width.

Before filling the hopper with the salt material ensure that the feeder holes at the bottom of the hopper are closed. Do not overfill the hopper. Maximum fill should finish 50 mm (2 inches) below the top rim of the hopper.

Always put the lid back on the hopper - this stops the material becoming too wet.

The spreader is designed for use with normal highway de-icing salt with moisture content not exceeding 4% of weight. The spreader will deal with most materials, however, successful spreading of material with the moisture content exceeding 4% cannot be guaranteed.

RECOMMENDED AMOUNT OF SALT PER m²

Based on using British 6mm road salt BS 3247:1991	PRECAUTIONARY FROST PROTECTION	FROST CLEARANCE		SNOW CLEARANCE
	10g per m ²	20g per m ²		40g per m ²
Based on using British 6mm road salt BS 3247:1991 Travel speed for spreading Steady walk	FEEDER HOLES	SPREAD in metres	APPROX. GRAMS per m ²	APPROX. COVERAGE FOR A FULL HOPPER (25KG)
	Fully Open	3m	63g	400 m ²
	Half Open	3m	40g	625 m ²

3. Maintenance

After each use, it is recommended that the spreader is cleaned of the remaining material by hosing down with water and drying (air dry). This should be carried out particularly if the spreader is not to be used for some time.

Oiling the moveable parts occasionally is recommended. This will improve performance and will reduce the impact of salt.

Use waterproof grease:

- Morris K2EP400 Lithium GB.
- MOL Chemresist 2 EU.

Appendix 1 Assembly Instructions

1. Take the spreader out of the box including all loose parts.
2. The handlebars come in two parts. Take the bottom part Fig (1) 1 and engage into the openings in the spreader Fig (1) 2 and secure the bars with split pins Fig (1) 3. Then engage the top part on the bottom part Fig (1) 4 and secure the bars with plastic thumb screws Fig (1) 5.
3. Remove nuts from the guide rod Fig (1) 6 and thread the guide rod through the hole in the end-part of the handlebars Fig (1) 7. Thread the bottom guide rod through the plastic guard, connect to the shutter opening and secure with a split pin Fig (1) 8. Push the guide rod to close the shutter holes in hopper. Then screw back one nut to the guide rod.
4. Put the control lever Fig (1) 9 into the groove at the top of the handlebars Fig (1) 10 and then put the guide rod through the hole in the bottom of the control lever and replace the second nut. (the bend in the top of the guide rod should face downwards)



Fig (1)

5. When “Shut“ shows above the groove in the handle bars the holes in the hopper should be closed. Likewise when “5“ is above the groove the holes will be fully open. The spreader is now ready for use.

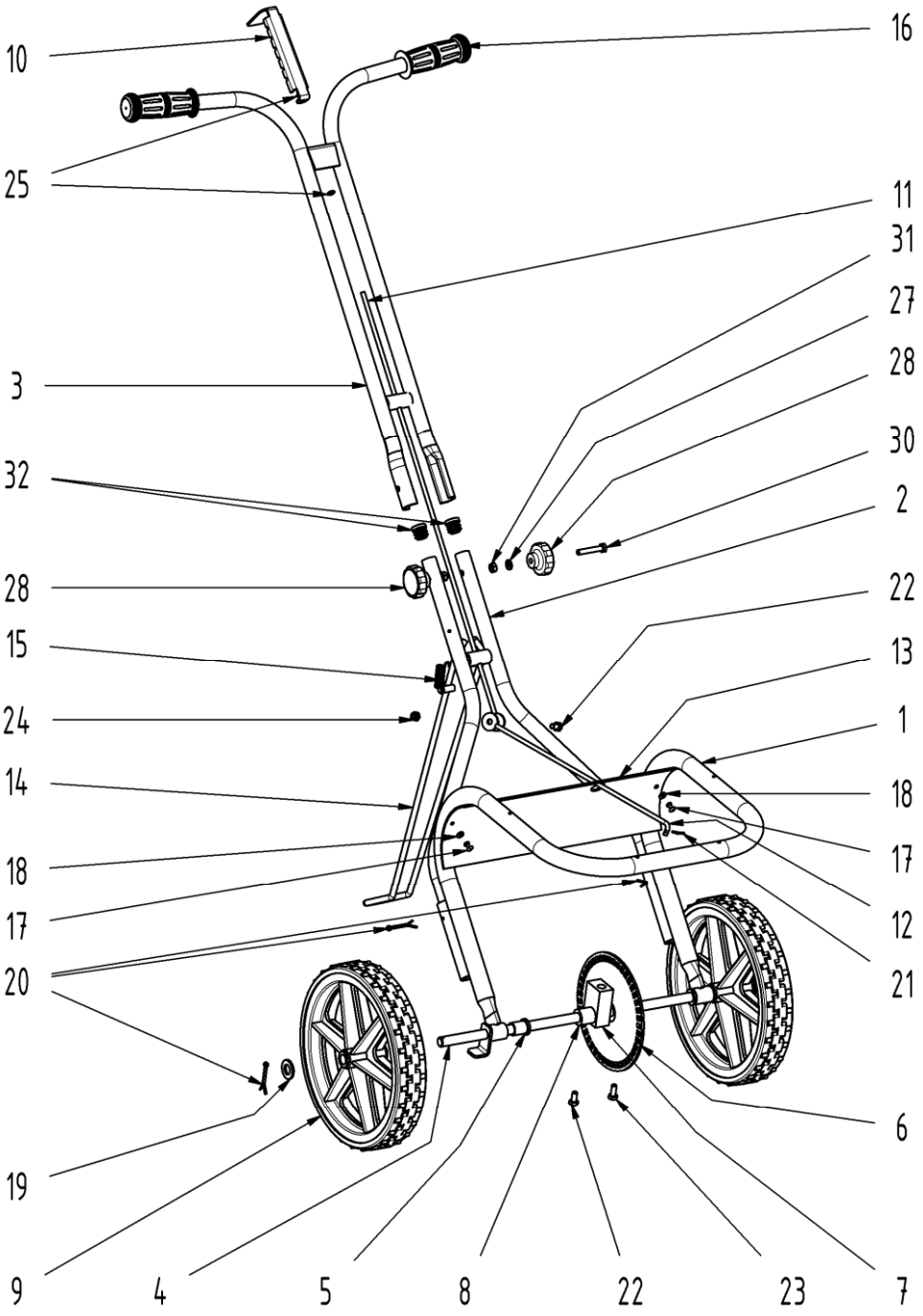
Appendix 2 Description

It has a tubular metal frame on two wheels.

A self-supporting frame carries a rectangle hopper with a lid.

The metal surfaces are treated with komaxit, a chemical protective paint, the hopper and lid are in plastic. The spreading wheel, the feeder holes shutters and the guide bar are stainless steel. Opening and closing the shutters of the feeder holes regulates the discharge of the salt. The power of the wheels is transferred to the spreading mechanism via special gear coupling.

Fig (2)

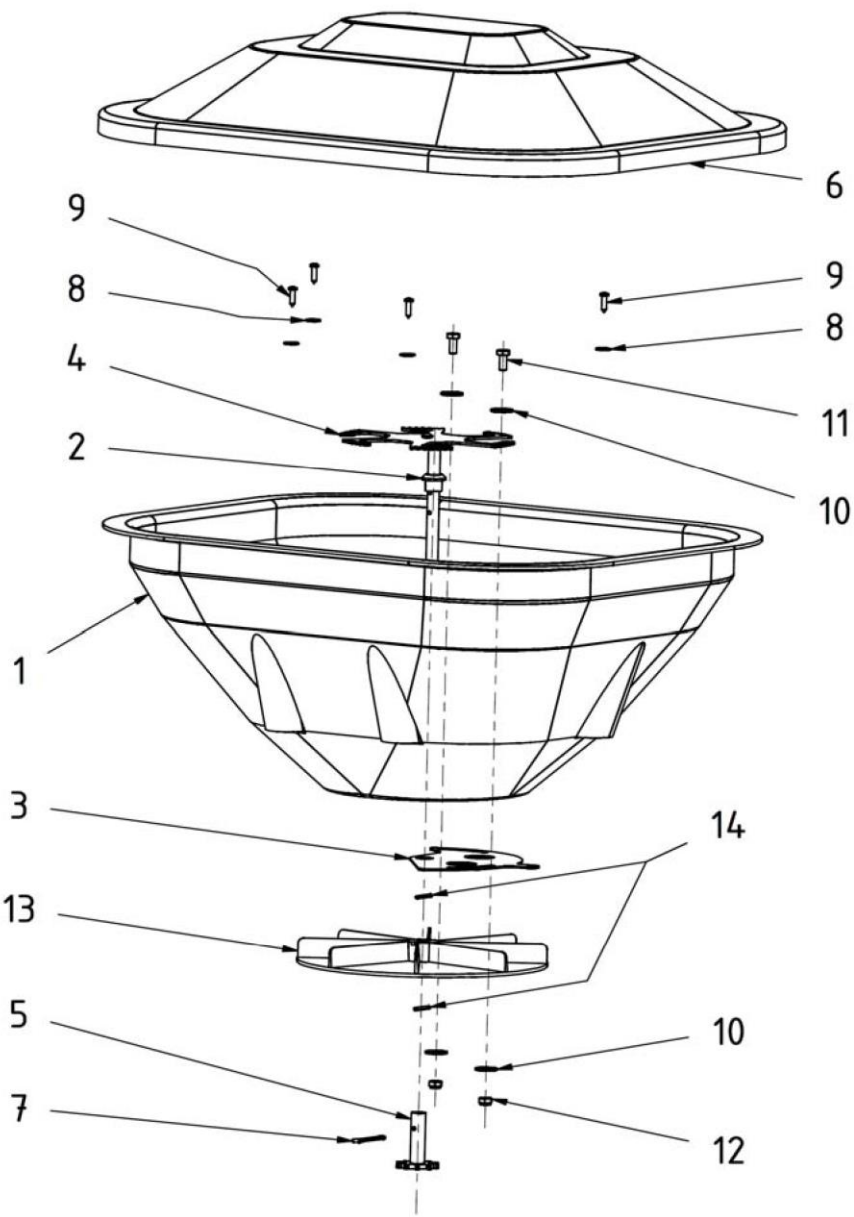


Spare parts catalogue Fig (2)

Art.	Item	Pcs	Order No.
1	Hopper support tube frame	1	11270.013
2	Handle lower part	1	11231.078
3	Handle top part	1	11231.076
4	Axle	1	12010.036
5	Axle bearing	2	41000.220
6	Power Wheel	1	51200.079
7	Gear coupling	1	31000.108
8	Gear coupling fitting	1	12010.038
9	Wheels	2	41000.210
10	Control lever	1	50000.051
11	Guide bar	1	41220.044
12	Lower guide bar	1	41220.039
13	Salt guard	1	31231.012
14	Stabilizer leg	1	12010.037
15	Stabilizer leg spring	1	31100.075
16	Rubber handle grips	2	21000.090
17	Guard fitting	2	33030.012
18	Stainless steel washer No. 3	2	96100.028
19	Zinc plated washer No. 13	2	96100.050
20	Split Pin 3	4	96300.010
21	Split Pin 2	1	96300.009
22	Zinc bolts M6x12	2	96000.160
23	Bolts M6x14 Stainless steel	1	96000.159
24	Self-tapping nut M6 zinc.	1	96200.009
25	Nut M5 Zinc	2	96200.011
27	Zinc plated washer No. 6	2	96100.060

28	Plastic thumb screws	2	41000.255
30	Zinc bolts M6x35	2	96000.013
31	Nut M6 Zinc	2	96200.050
32	Tube ends 18x1-2	2	21000.049

Fig (3)



Spare parts catalogue Fig (3)

Art.	Item	Pcs	Order No.
1	Hopper	1	21010.014
2	Activator bearing	1	41000.219
3	Shutter Plate	1	31000.003
4	Double Manx Activator	1	12010.063
5	Transmission shaft	1	51200.078
6	Lid	1	21010.020
7	Split Pin 3.2	1	96300.010
8	Stainless steel washer No. 4	4	96100.029
9	Stainless steel hopper fixing	4	96000.001
10	Stainless steel washer No. 6	4	96100.064
11	Stainless steel bolt M6x14	2	96000.159
12	Self tapping SS nut M6	2	96200.012
13	Spreading Plate	1	51230.036
14	Stainless steel spring pin 3	2	33030.004